

CORRECTION

Open Access



Correction to: Network analysis of the left anterior descending coronary arteries in swim-trained rats by an in situ video microscopic technique

Marianna Török^{1*†}, Petra Merkely^{1†}, Anna Monori-Kiss², Eszter Mária Horváth³, Réka Eszter Sziva^{1,3}, Borbála Péterffy³, Attila Jósваи⁴, Alex Ali Sayour⁵, Attila Oláh⁵, Tamás Radovits⁵, Béla Merkely⁵, Nándor Ács¹, György László Nádasy³ and Szabolcs Várbíró¹

Correction to: Biol Sex Differ 12, 37 (2021)

<https://doi.org/10.1186/s13293-021-00379-y>

Following publication of the original article [1], the authors reported an error in Fig. 9. The corrected Fig. 9 is given below and the original article [1] has been corrected.

Author details

¹Department of Obstetrics and Gynecology, Semmelweis University, Üllői u. 78/a, Budapest 1082, Hungary. ²Institute of Clinical Experimental Research, Semmelweis University, Tűzoltó u. 37-47, Budapest 1094, Hungary. ³Department of Physiology, Semmelweis University, Tűzoltó u. 37-47, Budapest 1094, Hungary. ⁴Department of Neurosurgery, Military Hospital, Róbert Károly körút 44, Budapest 1134, Hungary. ⁵Heart and Vascular Center, Semmelweis University, Városmajor u. 68, Budapest 1122, Hungary.

Published online: 18 June 2021

Reference

1. Török M, Merkely P, Monori-Kiss A, et al. Network analysis of the left anterior descending coronary arteries in swim-trained rats by an in situ video microscopic technique. *Biol Sex Differ*. 2021;12:37. <https://doi.org/10.1186/s13293-021-00379-y>.

The original article can be found online at <https://doi.org/10.1186/s13293-021-00379-y>.

* Correspondence: torok.marianna91@gmail.com;
torok.marianna@med.semmelweis-univ.hu

†Marianna Török and Petra Merkely contributed equally to this work and are considered first authors.

¹Department of Obstetrics and Gynecology, Semmelweis University, Üllői u. 78/a, Budapest 1082, Hungary

Full list of author information is available at the end of the article



© The Author(s). 2021 **Open Access** This article is licensed under a Creative Commons Attribution 4.0 International License, which permits use, sharing, adaptation, distribution and reproduction in any medium or format, as long as you give appropriate credit to the original author(s) and the source, provide a link to the Creative Commons licence, and indicate if changes were made. The images or other third party material in this article are included in the article's Creative Commons licence, unless indicated otherwise in a credit line to the material. If material is not included in the article's Creative Commons licence and your intended use is not permitted by statutory regulation or exceeds the permitted use, you will need to obtain permission directly from the copyright holder. To view a copy of this licence, visit <http://creativecommons.org/licenses/by/4.0/>. The Creative Commons Public Domain Dedication waiver (<http://creativecommons.org/publicdomain/zero/1.0/>) applies to the data made available in this article, unless otherwise stated in a credit line to the data.

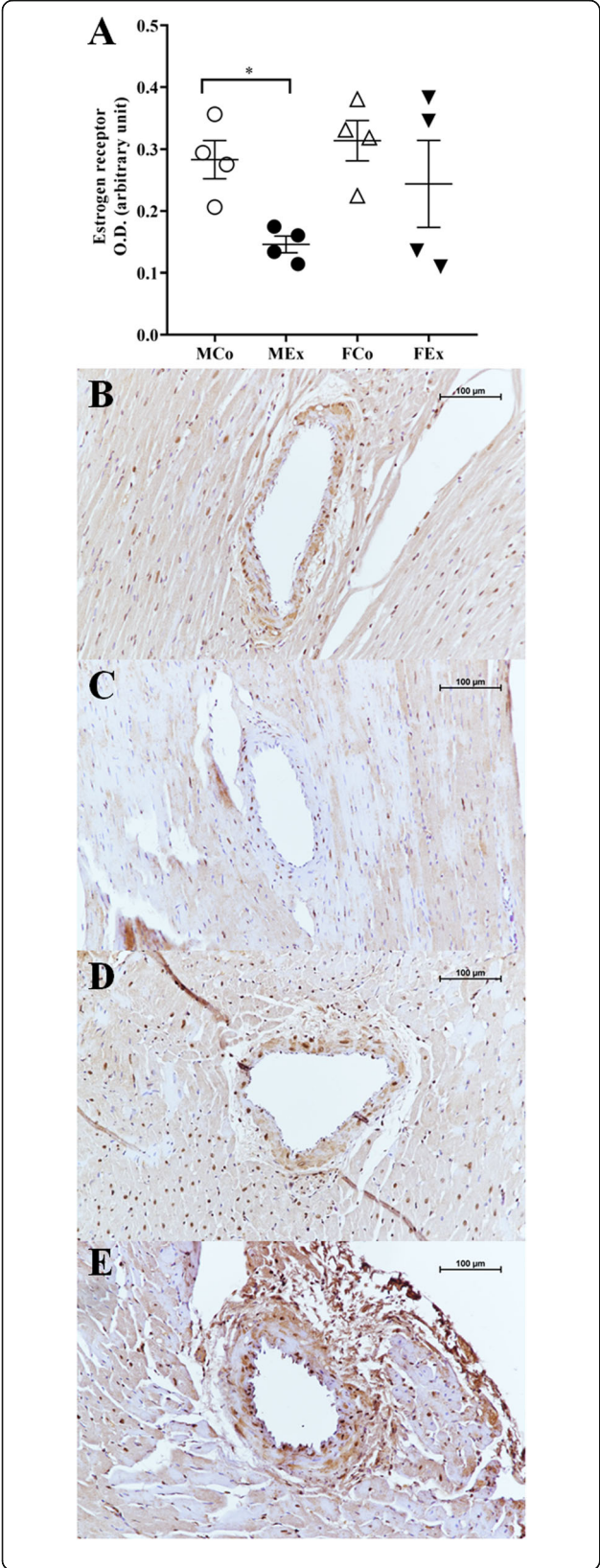


Fig. 9 Results of estrogen receptor (ER) immunohistochemical staining. **a** ER optical density ($n = 4-4-4-4$); **b-e** representative images of ER stained arteriole segments from MCo, MEx, FCo and FEx groups. Scale bar, 100 μ m. Two-way ANOVA with post hoc Tukey's test. ($F_{\text{training}} = 6.004$, $F_{\text{sex}} = 2.317$, $F_{\text{int}} = 0.633$, $df_{\text{training}} = 1$, $df_{\text{sex}} = 1$, $df_{\text{int}} = 1$, $P_{\text{training}} = 0.031$, $P_{\text{sex}} = 0.154$ and $P_{\text{int}} = 0.442$)